



Welcome

Welcome to the third edition of the Callignee Community Centre newsletter. This project is all about working with the community to design a multipurpose facility that will meet the needs of the entire community to replace the former Callignee Hall that was destroyed in the Black Saturday fires. This newsletter is one of the tools used to keep the community informed on exactly where this project is at, as well as give all members of the community an opportunity to comment and be involved in this important project.

The Callignee Community Centre

The new building will be situated facing west overlooking the oval. The new design includes a community hall with stage, large kitchen, and external doors opening up onto a large patio that will face north and look out towards the two remaining oak trees. There will be a foyer, amenities, and a large meeting room with kitchenette and store room. The CFA building will be located at the south side of the structure. These aspects of the facility will be linked by a fully enclosed walkway. The new cricket pavilion will be joined to the main building by an undercover walkway, with direct access to the oval, cricket change room and amenities, and will also house the public toilet facility. A floor plan of the building has been included in this newsletter.

Architect

Latrobe City Council has engaged Blomquist + Wark to complete the detailed design of the Callignee Community Centre. Established in 1976, Blomquist + Wark have gained an industry wide reputation for its proactive, practical and professional approach, and for producing documentation of the highest calibre, reflecting competence and exceptional care and skill.

It was hoped that the design would now have been completed, however the process has been delayed due to some recent design changes. These changes were necessitated by a recent donation of environmental initiatives for the building as well as

feedback received from the Community Reference Group (CRG).

Donations

A range of organisations have committed to assist in this project. Potential donations were discussed at the last CRG meeting. Latrobe City Council is currently working with these organisations to investigate the opportunities.

Current and Upcoming works

Road Re-Alignment

The former Callignee Hall and old school building were separated from the community oval by Old Callignee Road. This separation of facilities created a dangerous mix of pedestrians and traffic during large community events. Early in the design process the possibility of realigning Old Callignee Road to allow the integration of the oval and the new Callignee Community Centre was explored and endorsed by the community.

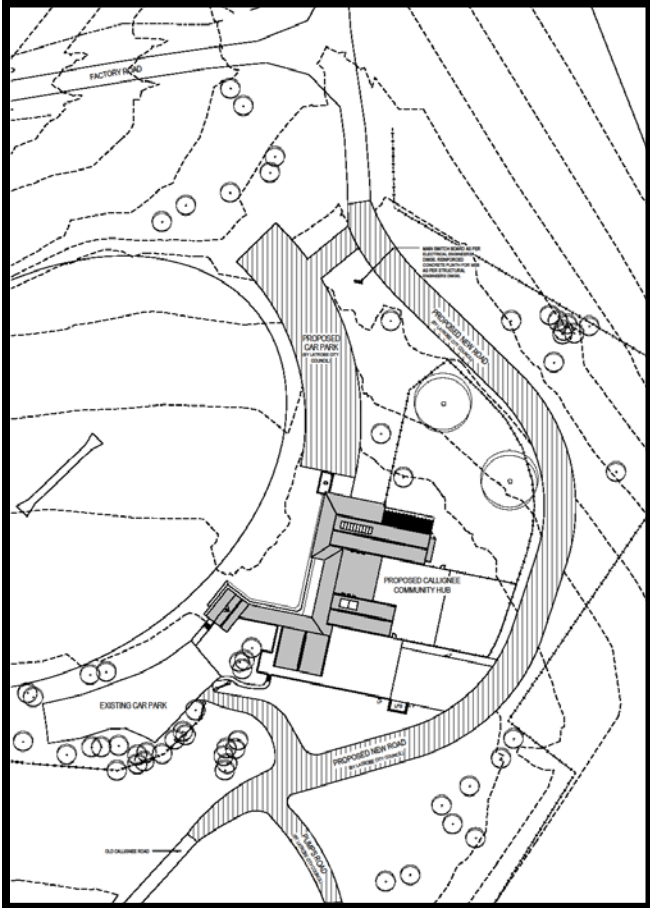
A contract is currently being finalised with a contractor to complete the road deviation works. These works will commence during October and include a 6 week construction period.

Street Lights

The street lights have now been installed in preparation for the new road alignment works. Installation of street lighting delineates this new section of road, whilst also improving the road safety around this new piece of community infrastructure. As this facility will be utilized by the CFA, safe access to this building at all times of the day and night was deemed particularly important. Realignment of the Telstra cable has also been completed.

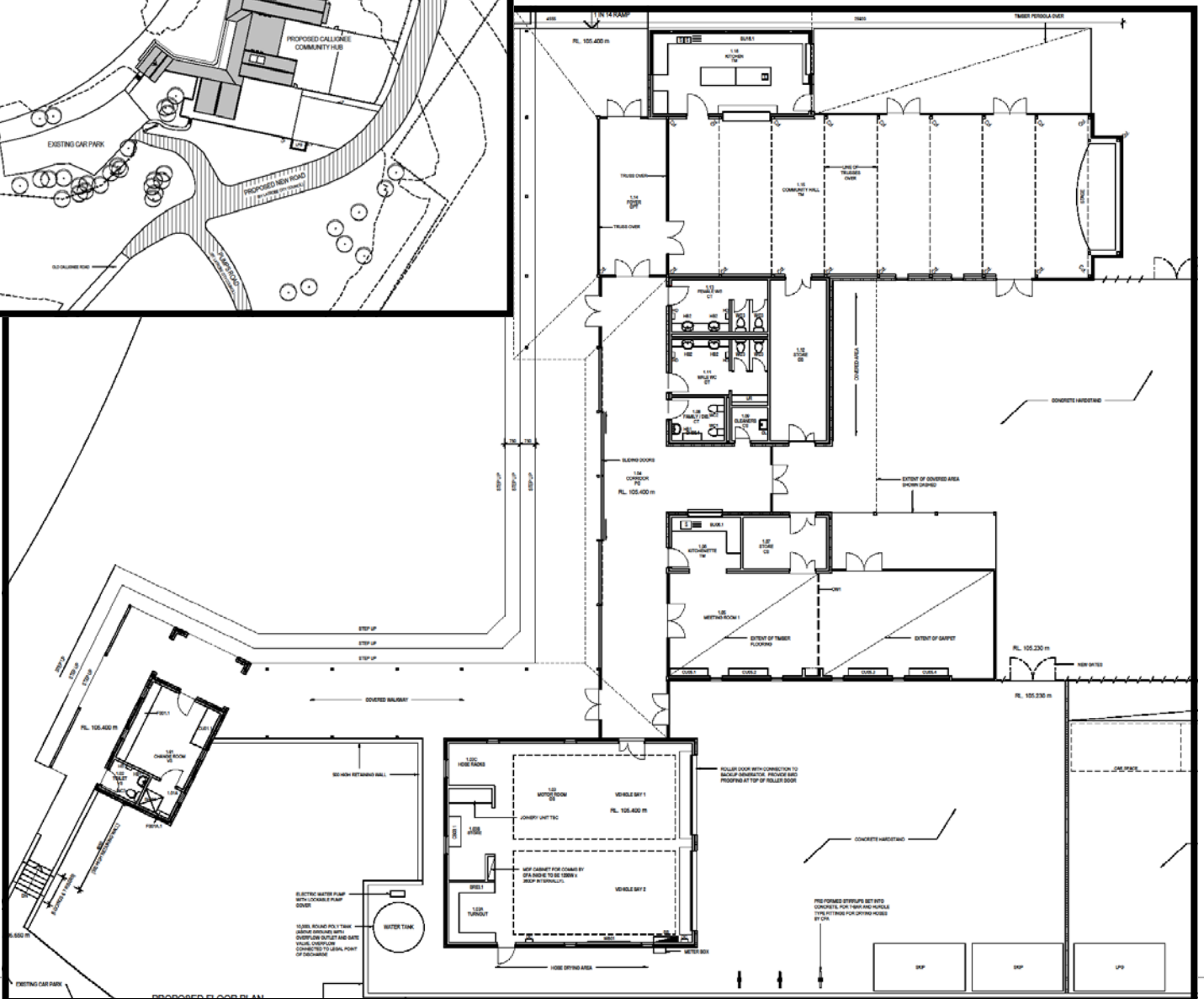
Construction Tender

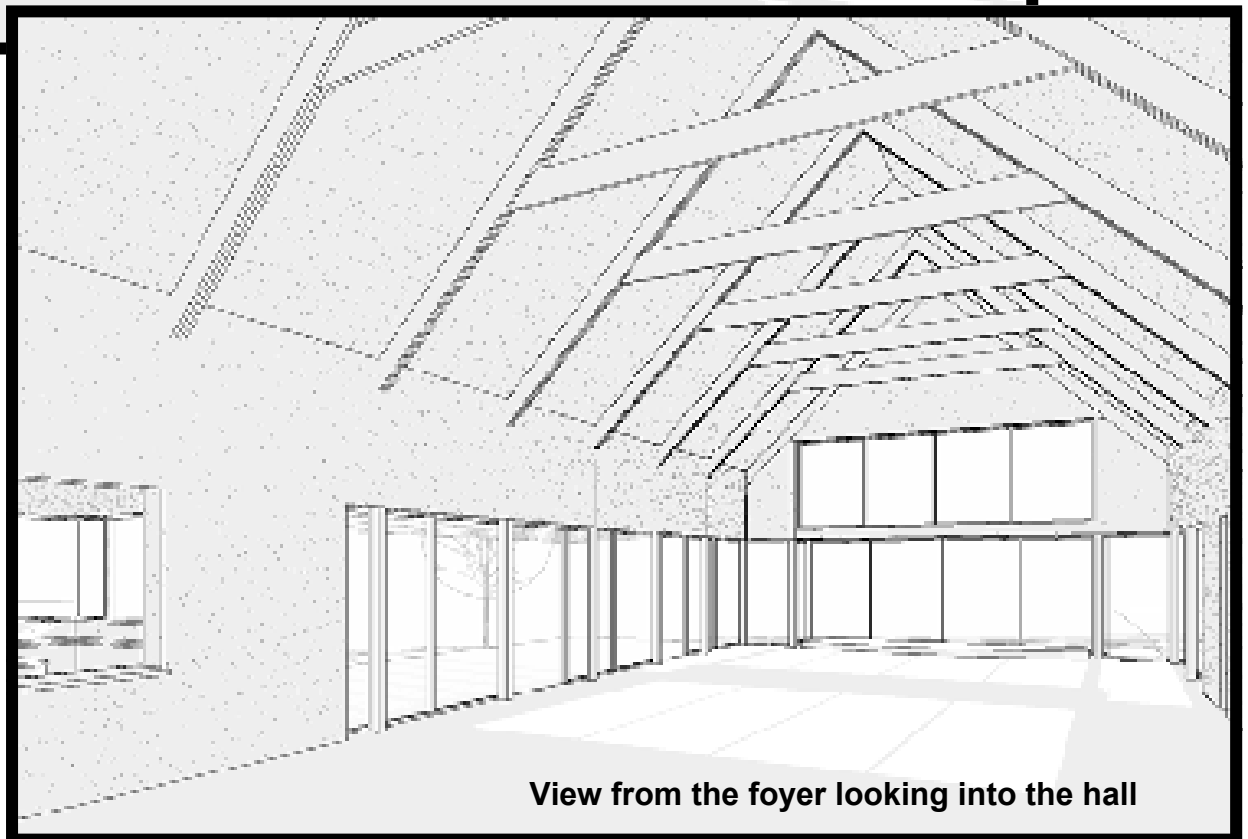
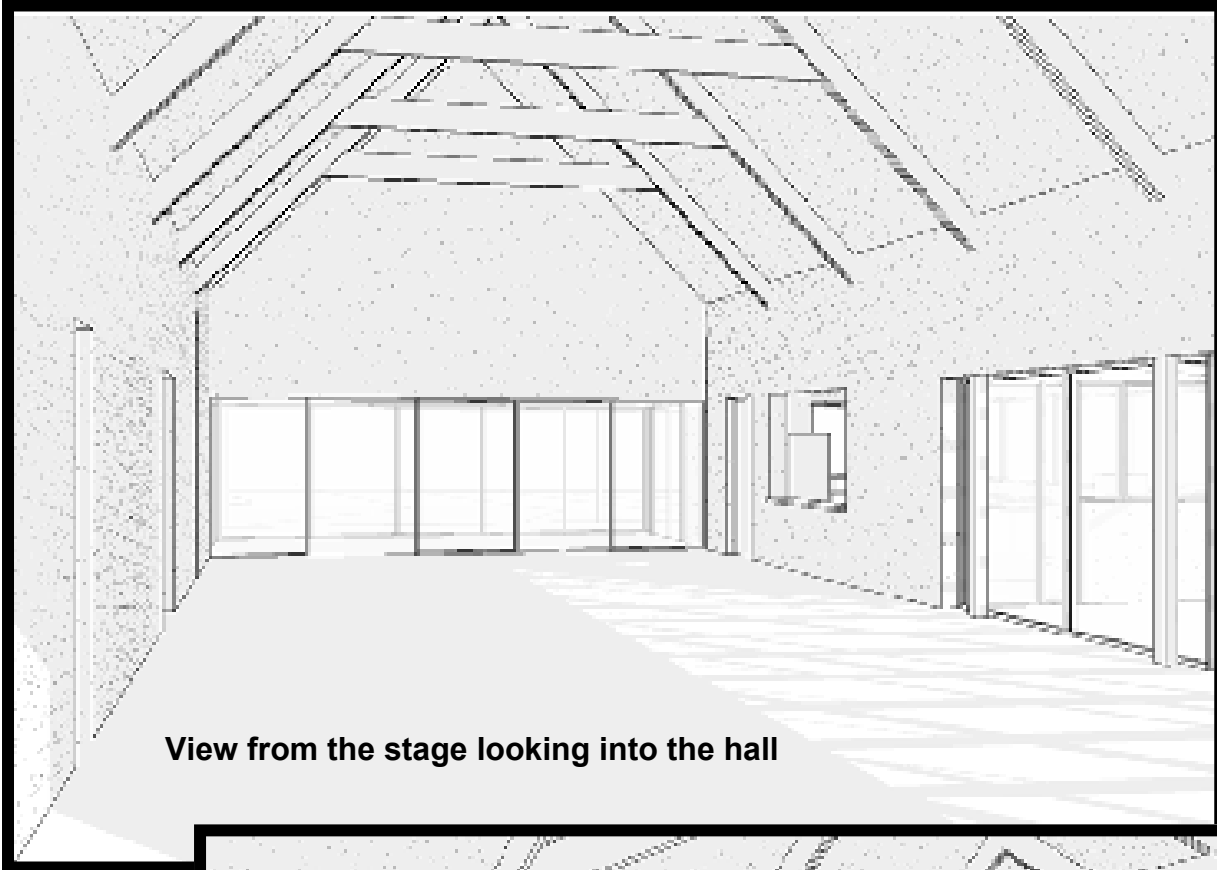
Expressions of interest were advertised in May for the construction of the new Callignee Community Centre, which will allow a more streamlined tender process for the construction of the new facility. The tender process will commence late October with tenders closing during November.



← Site plan including road realignment

Floor Plan ↓







Community Recycling Facility

The placement of community recycling bins was discussed at the last CRG meeting. The proposed site for the recycling bins is next to the existing concrete water tanks. The CRG were very keen to ensure this service was still able to be provided at the new facility, without impacting on the accessibility of the fire station.

Car Parks

The existing car park will be retained, including the Wes Pump Memorial Gates at the entrance. There will be a new car park to the north of the new building with 29 car parks, 2 disabled parks and direct access to the new facility.

BBQ Area

Latrobe City Council is investigating a public BBQ area that was suggested at the last CRG meeting. The suggested position for the BBQ area is in between the hall and the old oak trees, and would include a public BBQ shelter and picnic facilities. Once the detailed design for the building has been completed, the design of this picnic and BBQ area will commence.

Landscaping

The CRG has raised the possibility of a community memorial garden to form a part of the Callignee Community Centre precinct. A further community consultation process will be conducted in the future to better understand the community's thoughts and ideas around a memorial.

Should you wish to pass on any comments or ideas, please don't hesitate to contact Damian Blackford or a member of the CRG.

Oak Trees

Latrobe City arborists have been closely monitoring the oak trees that were severely damaged during the fires. The eastern most oak tree has a split down one side and has had a cable inserted through the split, to assist in repairing it. Fertiliser and a sugar solution were administered to the surrounding ground to help stimulate root growth. Latrobe City arborists will continue to closely monitor the trees over the coming months.

Community Reference Group

The last CRG meeting was held on Wednesday 7 October. A range of topics were discussed by the group. The CRG members can be contacted for further information of required.

The members are:

Rudi Bence	CATS Cricket Club
Anita Charles	Callignee Playgroup
Leanne Crowe	Callignee Resident
Paul Crowe	Hall Committee
Ian Ewart	Callignee CFA
Jon Missen	Traralgon Sth & District Assoc.
Mardi Symons	Country Women's Assoc.

How to receive information

Latrobe City is committed to ensuring that all members of the community are informed about this project.

If you have any questions, comments or would like to view a large copy of the floor plan please don't hesitate to contact Damian Blackford on 5128 5307 or damianbl@latrobe.vic.gov.au